

# the Wheelagram



Materials Cleaning Systems Division  
**Wheelabrator-Frye Inc.**

VOL. III NO. 30

AUGUST 10, 1979

THE UNITED WAY . . . Our Management and Union have joined forces to form a new United Way Committee, similar to Uniroyal's successful concept. The purpose of the new committee is to provide better United Way services for all Wheelabrator employees. Committee members include: **John Bergh**, Engineering; **Mildred Boehlein**, Accounting; **Dale Bressler**, Assembly; **Chuck Johnson**, Tool Room; **Sophie Kinney**, Inspection; **Steve McTigue**, Industrial Relations; **Mary Lou Rethlake**, Marketing; **C. L. Sullivan**, Maintenance; **Al Skwiercz**, Stockroom; **Ed Walesevicz**, Steel Fabrication. Serving as co-chairmen of the committee are C. L. Sullivan and Chuck Johnson.



Reading over the services offered by the United Way Agency are committee members (from l to r): **CHUCK JOHNSON**, **STEVE McTIGUE**, **C.L. SULLIVAN** and **DALE BRESSLER**.



Committee members (from l to r) **MARY LOU RETHLAKE**, **SOPHIE KINNEY** and **MILLIE BOENLEIN** discuss publicity with Wheelagram editor **DEL TENNEY**.

LET'S SPRUCE UP OUR WORK HABITS . . . From time to time we should all take a look at our work habits to see if they're up to par. Are we measuring up to our own as well as the company's expectations? If so, the job is already done — if not, let's spruce 'em up! A checklist is found in the "You and Your Job" booklet, the work rules posting in the plant and several are noted in the Union contract. Help yourself! Help your company!

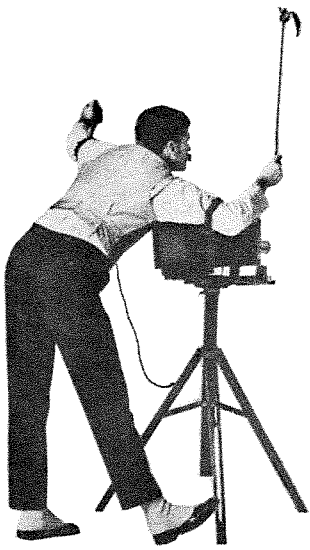
TODAY marks 20 years of company service for **Dick Slocum**, Superintendent-Foundry. Congratulations, Dick!

NEW FACES . . . Welcome to: **Bernard J. Molenda**, Arc Welder-Steel Fabrication; **James W. Dailey**, Arc Welder-Steel Fabrication.

PROMOTIONS & APPOINTMENTS . . . **Dan Spinner**, Industry Manager-Foundry, has been promoted to Regional Manager-Central Region. Succeeding Dan is **Gary Weil**, who will relocate from Birmingham, Alabama, where he has served as Account Sales Manager-Southern Region. **Ernie Gibson** is appointed to the position of Special Projects Engineer and will be responsible for dust collector proposals, Canadian Airblast Room proposal coordination, Government bids and special projects. Succeeding Ernie as an Account Sales Engineer-Central Region is **Steve Ellison**. Over the past two years, Steve has worked as a Regional Parts Sales Supervisor and, most recently, as a Sales Trainee, handling the Delta product line. **Bill Niedbalski** is assigned to the Equipment Systems area to handle Delta Line sales and other work in standards. **Frank Filkins** has been named Industry Manager-Steel. For the past two years, Frank has served as an Account Sales Engineer-West Central Region. Good luck in your new assignments, gentlemen!

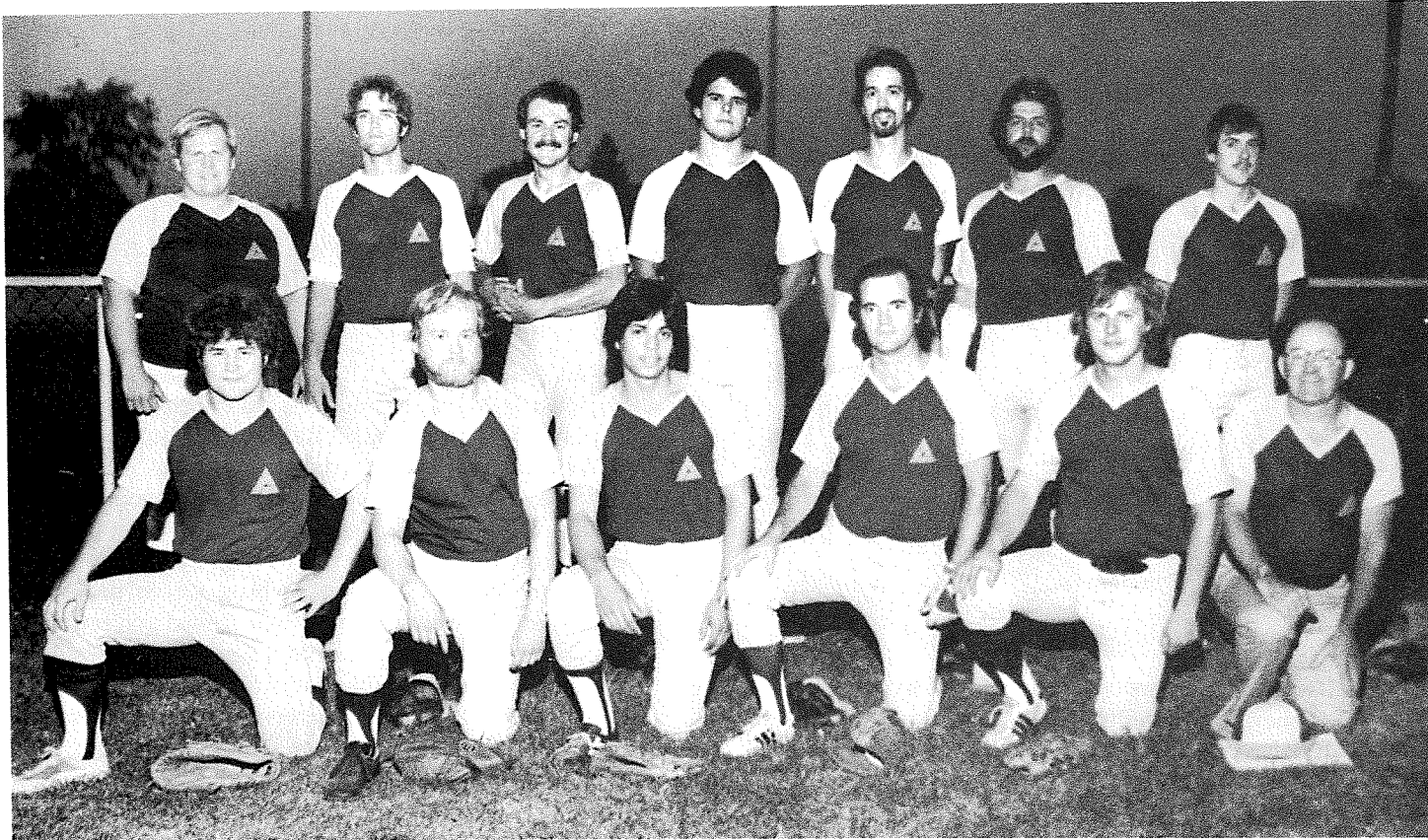
OUR ATHLETIC ASSOCIATION will be happy to learn that the new Susan B. Anthony dollars are accepted by the coffee machines. Reported by the Marketing Manager-Abrasive Products, who understandably wishes to remain un-named, the new dollar, which is only slightly larger than a quarter, works remarkably well — providing the selected choice of beverage and 10 cents in change. Being the first to buy a 90 cent cup of coffee, the source of this story encourages someone else to be the first to purchase a \$1.10 Pepsi.

THE MOST DEEPLY rooted desire of human nature is the craving to be appreciated.

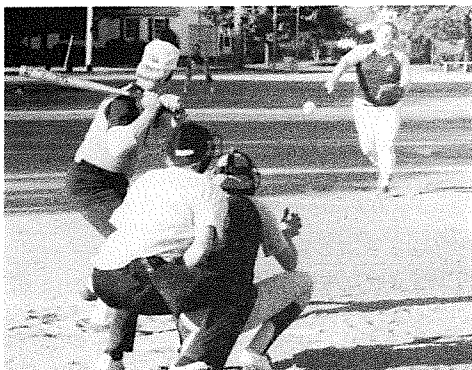


# ON CAMERA...

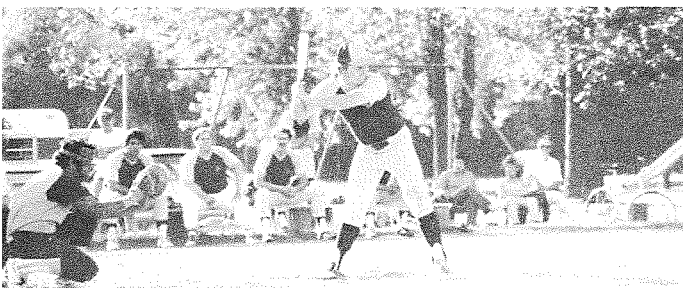
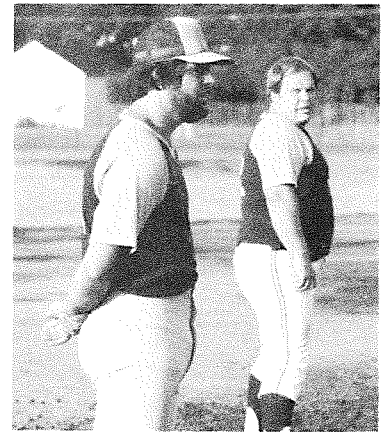
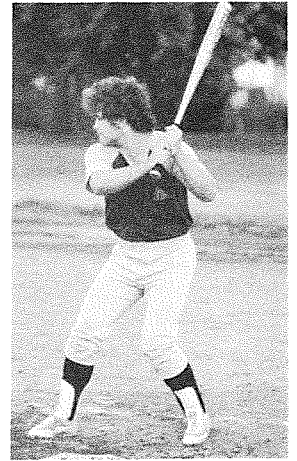
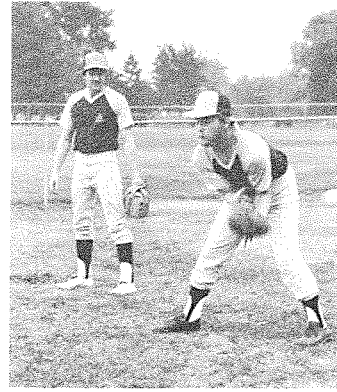
## WFI SOFTBALL TEAM



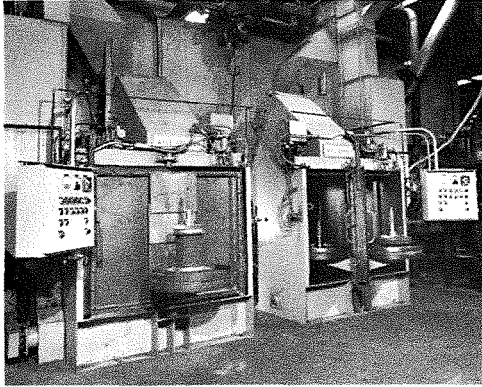
After competing in the City A League Tournament, our players completed the season with a 9-8 record. Team members include (standing l to r): PAT WOODRUFF, MARK HENKE, JIM ROBBINS, JIM HAUTMAN, MARK KOBOLD, JIM BARNHART, JOHN GOTTLIEB. (kneeling l to r): ED BIGGS, DAVE LOCSI, PEEWEE SAMORA, KELLY TUCKER, JERRY CHRISTY, EARL REIDENBACH. (Missing from the photo is teammate JEFF DOWNING.)







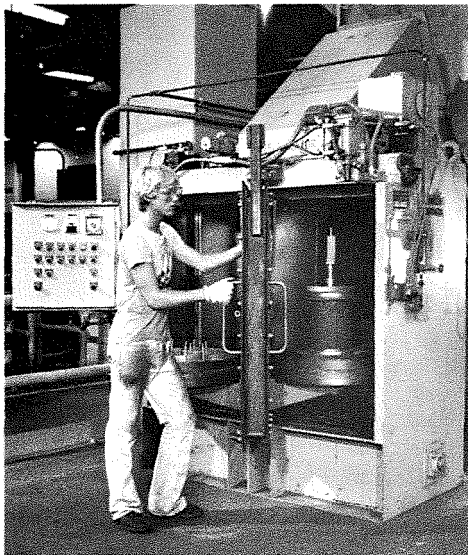
## NEW APPLICATION — NEW MACHINE . . .



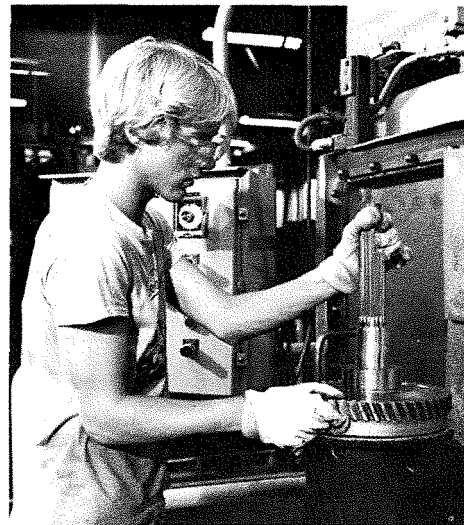
Two Wheelabrator Reciprocating Dual Table (RDT) machines have been installed by a large Indianapolis manufacturer for low production peening of the tooth area of automotive transmission gears. (Shot peening is widely used to increase the fatigue life of stressed parts such as automotive gears and springs, as well as many aircraft engine, landing gear and wing components.)

The RDT features a work door equipped with two 27" tables — one located on either side of the door. Operation of the manual door moves the worktables alternately back and forth between the blast chamber and load-unload station.

This concept provides a smooth work flow, as one table can be loaded/unloaded while simultaneously blasting on the opposite table.



**The RDT machines provide many of the work handling benefits of our double-door swing table, with lower equipment costs and floor space savings.**



**Transmission gears are placed on a special holding jig attached to the table. Inside the blast chamber the table rotates as a single blast wheel peens the gear tooth area.**

**HITTING THE LINKS . . .** Holding steady in first place, after nine rounds of play is Team 5 (**F. Walker, G. VanBruaene, S. Ellison, J. Vasein**). First Team Low Net (130) Team 8 (**B. Shultz, J. Ankney, J. Stull, B. Truex**); First Team Low Scratch (160) Team 12 (**J. Baker, R. Hullinger, S. Sinderson, L. Cookie**); Individual Low Net (25) **D. Mecklenburg**; Individual Low Scratch (33) **H. Breske**.

**MEMORANDUM:** The annual Twilight Golf League Outing will be held Sunday, August 16, at the Swan Lake Golf Academy, Plymouth. Dinner will follow at the American Legion Post, Lakeville. Make up your foursome and call in your reservation to **Pat Nagy**, ext. 225. \$10 fee for league members, \$11 fee for non-members.

**MEN ON THE GO . . .** Wheelabrator was well represented in the recently held Nike/Fair Store 10,000 Meter Road and Trail Race. WFI competitors to the end were: **Dave Schroeder, Wayne Lauer, Jim Robbins, Will Glusac, Judd McKinley, Paul Myers, Jim Cooke and Dick Fenska**.

**WFI LITTLE LEAGUERS TOURNAMENT CHAMPS . . .** Placing second in their division, the WFI-sponsored Major League Team (boys, 10-13 years of age) went on to take first place in the City Tournament. A member of the winning team is **Chris Unruh**, age 10, son of Machine Shop's **Mike Unruh**.

**CHICKEN & CORN** are on the menu at this year's Company Picnic. Sponsored by our Athletic Association, the festivities begin at Noon, Saturday, August 18, at the Wander Conservation Club, Mishawaka. See your area AA rep for your tickets — only \$2 per family.